

5 GALLON PRESSURE BOTTOM OUTLET TANK WITH AIR AGIT



GENERAL INSTRUCTIONS

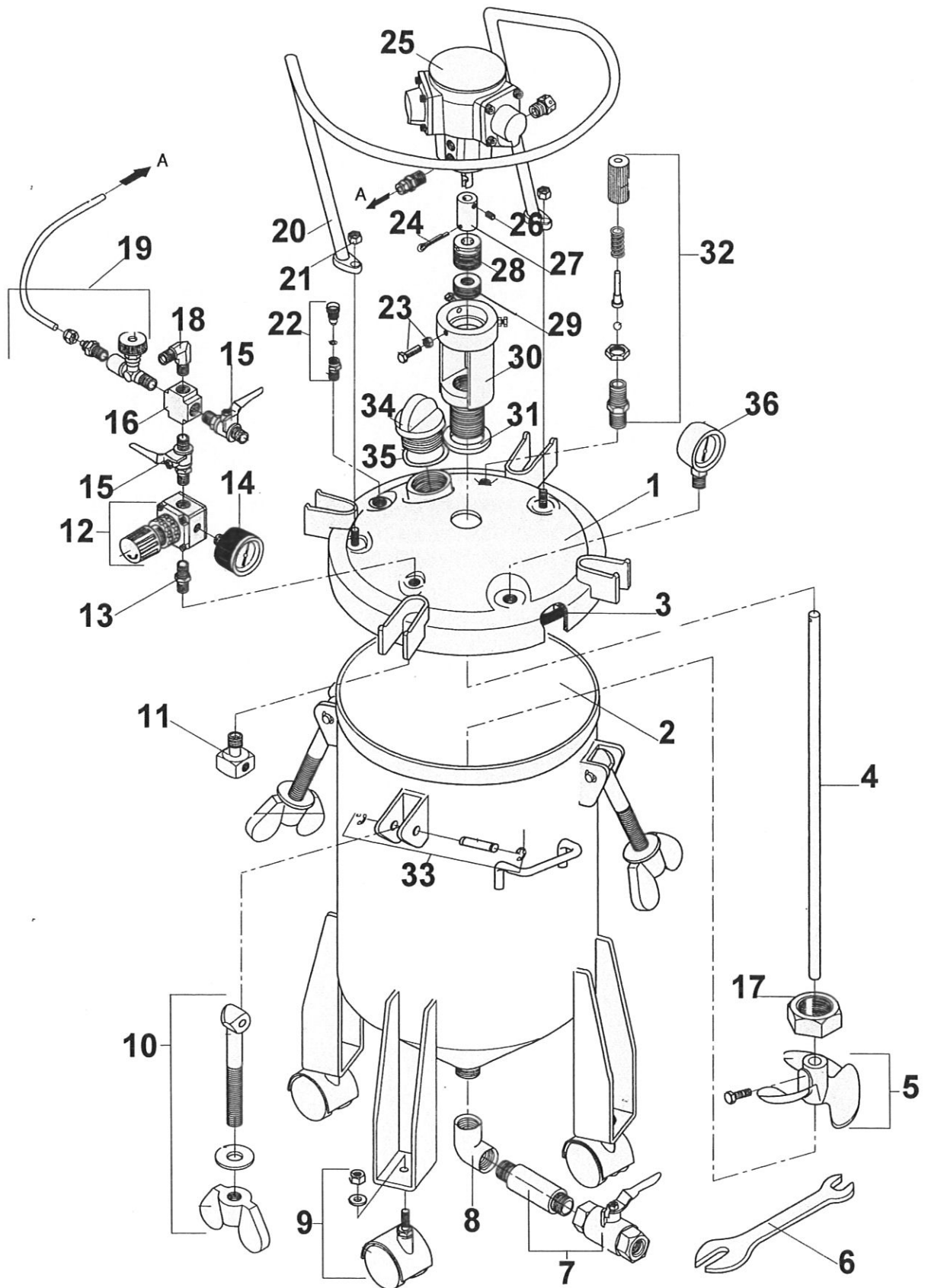
This pressure tank is equipped with either single or double regulators, pressure safety relief valve, tank vent valve, bottom outlet ball valve and an air powered agitator.

1. Turn regulators to zero. Close ball valves. Turn agitator knob to off position. Fill tank with product and tighten down lid with wrench provided.
2. With air from compressor on, open all ball vaves. Adjust pot pressure as needed to flow material to gun.
3. Adjust gun regulator if provided, to atomize material as needed.
4. Adjust agitator knob to the slowest speed that mixex the material as needed.

CAUTION

- Do not exceed tank working pressure of 80 Psi. The safety relief valve is designed to protect the tank against excessive pressure. DO NOT attempt to make any adjustments to this valve. If tank begins to vent air pressure, reduce the pressure on the tank regulator.
- DO NOT alter the tank in any way. This includes welding, machining and drilling as this may weaken the structure of the tank.
- ALWAYS grounding the tank with a 12 gage wire to the tank and a known earth ground to avoid hazardous electric sprks from occurring.
- BE SURE tank pressure is completely relieved before attempting to remove tank lid. Always shut off main supply air to the tank, and vent pressure from the tank with the vent valve located on tank cover.

ITEM NO.	PART NUMBER	DESCRIPTION
1	51-575	TANK LID
2	51-578	BOTTOM OUTLET SHELL
3	51-520	GASKET
4	51-574	AGIT SHAFT
5	51-246	PROPELLER W/ BOLT
6	51-225	WRENCH
7	51-274	FLUID OUTLET BALLVALVE
8	51-275	FLUID OUTLET ELBOW
9	51-224	CASTER (OPTIOAL STATIONARY FEET AVAILABLE, P/N 51-252)
10	51-236	EYE BOLT ASSEMBLY
11	51-237	AIR FLOW DIFUSSER
12	51-222	AIR REGULATOR ASSEMBLY
13	51-239	DOUBLE MALE NIPPLE
14	52-56	PRESSURE GAGE
15	52-150	AIR SHUT OFF VALVES
16	51-267	4 WAY UNION
17	51-259	RETAINING NUT
18	51-268	90 DEGREE ELBOW
19	51-247	SPEED CONTROL VALVE FOR AGITATOR
20	51-535	GUARD
21	98-0115	3/8-16 NUT
22	51-234	TANK VENT VALVE
23	51-264	SCREW & NUT 1/4-20 x 1" lg.
24	51-266	ROLL PIN
25	51-240	AIR MOTOR
26	51-262	SET SCREW 1/4-20 x 1/4 lg.
27	51-242	COUPLING
28	51-243	GUIDE
29	51-289	SHAFT SEAL ASSEMBLY
30	51-241	AIR MOTOR BASE
31	51-245	SEAL RING
32	51-229	SAFETY RELIEF VALVE ASSY.
33	51-233	PIN ASSEMBLY
34	51-524	MATERIAL FILL CAP
35	51-522	SEAL RING - FILLER CAP
36	52-58	PRESSURE GAGE



BOTTOM OUTLET TANKS

2.5 GALLON	PART #	REGULATORS	AGITATOR
	51-210	0	0
	51-211	1	0
	51-212	2	0
	51-213	1	AIR
	51-214	2	AIR
	51-215	0	AIR

5 GALLON	PART #	REGULATORS	AGITATOR
	51-510	0	0
	51-511	1	0
	51-512	2	0
	51-514	1	AIR
	51-515	2	AIR
	51-513	0	AIR

10 GALLON	PART #	REGULATORS	AGITATOR
	51-560	0	0
	51-561	1	0
	51-562	2	0
	51-564	1	AIR
	51-565	2	AIR
	51-563	0	AIR